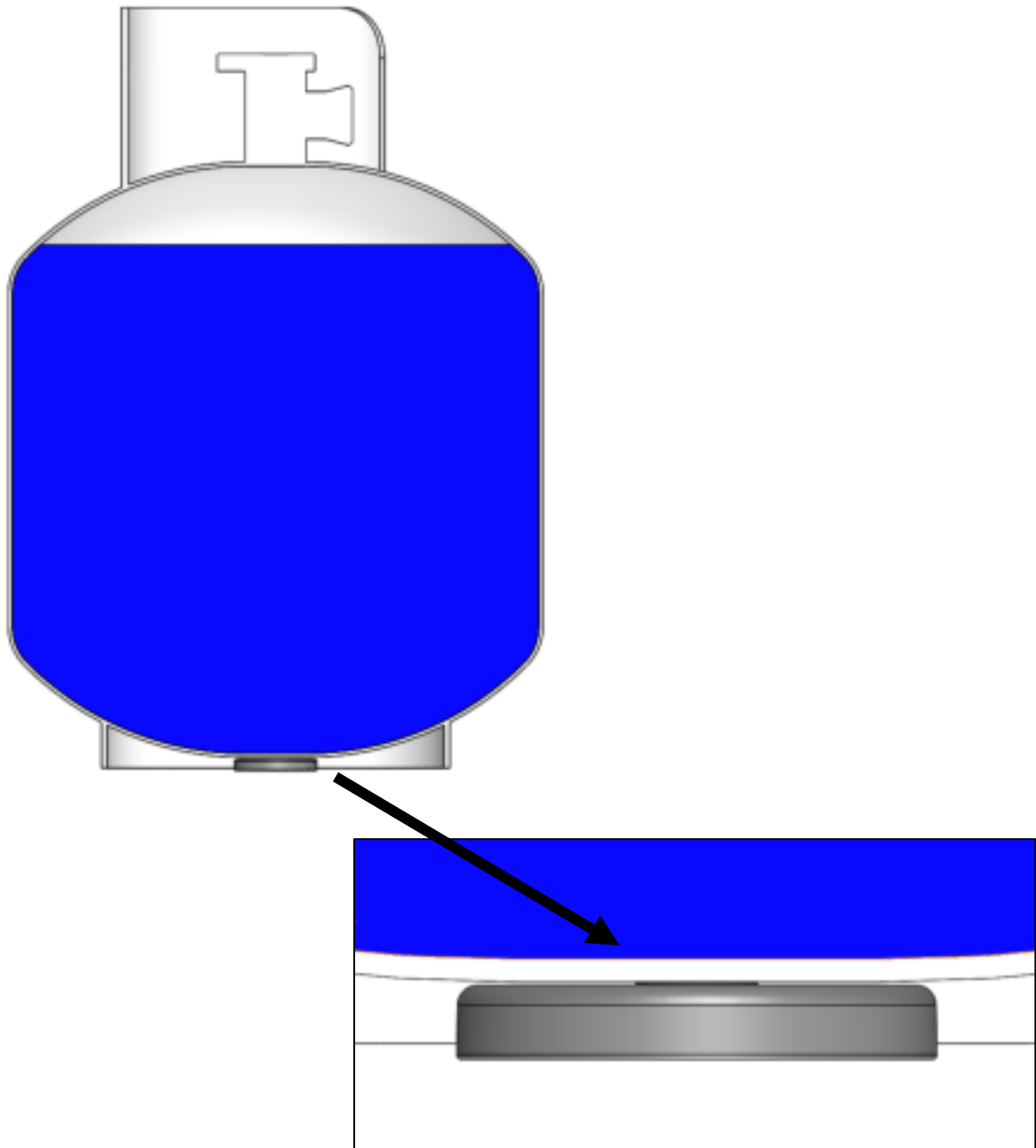
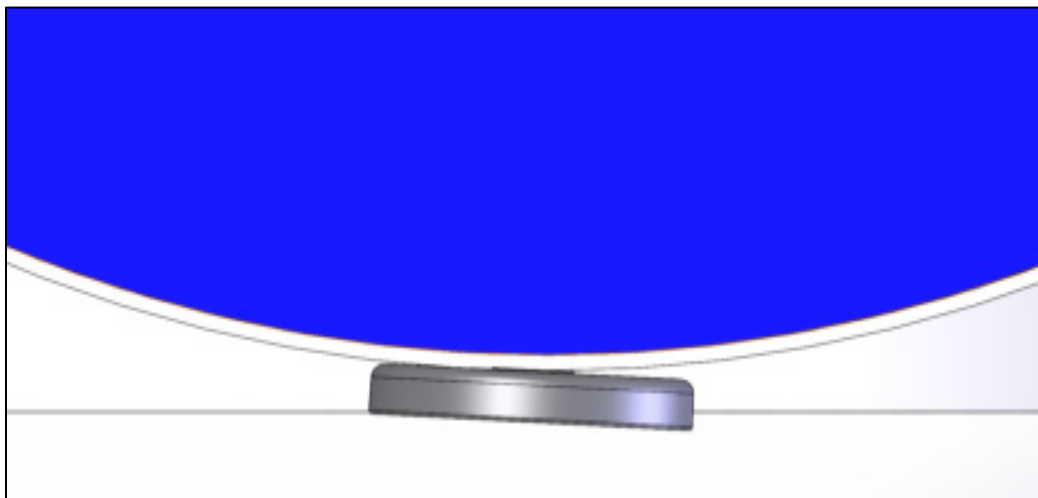


Bulletin-Rounded Bottom Vertical Cylinders

Most cylinders have a small flat area in the bottom center, or a shallow curve, such that both sensor magnets touch, and sensor is in correct horizontal position.



In rare cases, some tanks have more of a curve, such that only one magnet touches. With only one magnet touching, the sensor is likely not in a level position as required for proper function.



Solution--

Place one or more layers of tape over both magnets (the same # of layers on each magnet). The extra thickness on top of the magnet limits how much the sensor can rock, and thus puts the sensor in the correct horizontal position.

